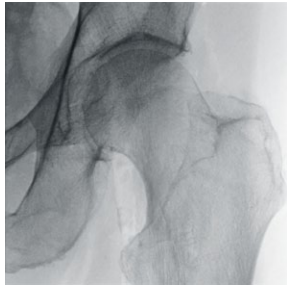


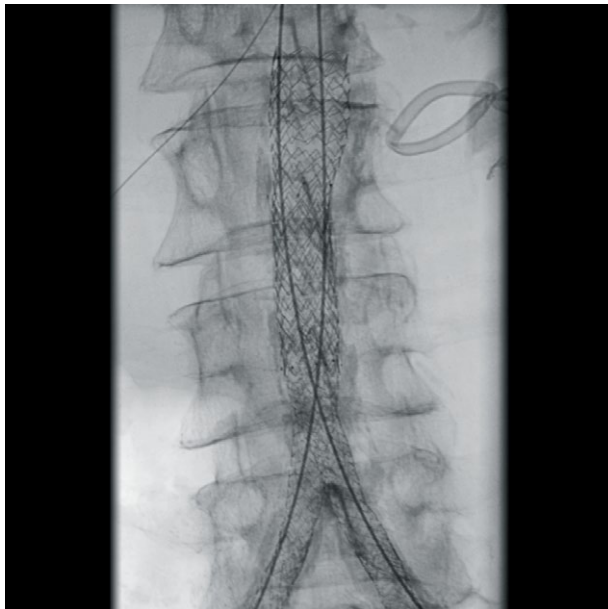
UNLOCK THE POWER DURING DEMANDING PROCEDURES



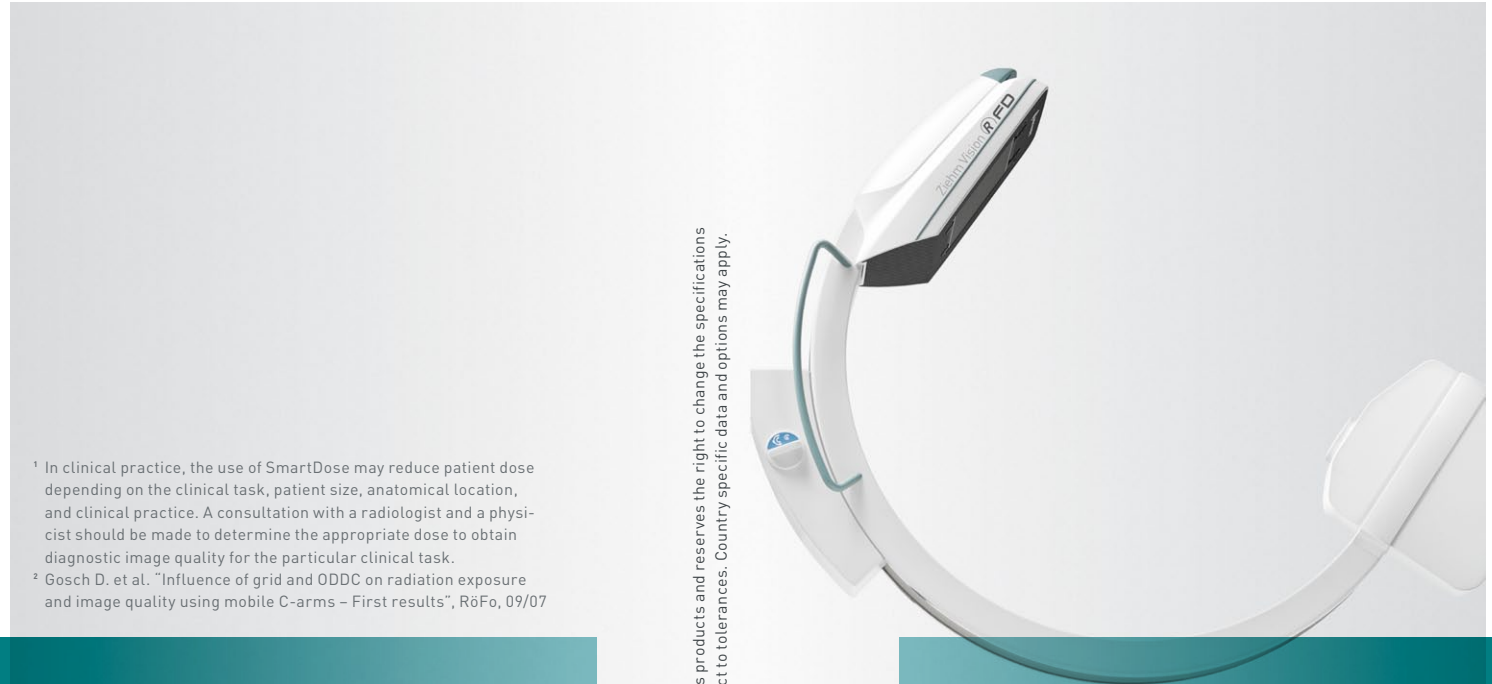
Pelvis



Abdominal aortic aneurysm



Endovascular aneurysm sealing



¹ In clinical practice, the use of SmartDose may reduce patient dose depending on the clinical task, patient size, anatomical location, and clinical practice. A consultation with a radiologist and a physicist should be made to determine the appropriate dose to obtain diagnostic image quality for the particular clinical task.

² Gosch D. et al. "Influence of grid and ODDC on radiation exposure and image quality using mobile C-arms – First results", RöFo, 09/07

© 2017 Ziehm Imaging, 281106_02/2017
Ziehm Imaging is constantly improving its products and reserves the right to change the specifications without notice. Presented data are subject to tolerances. Country specific data and options may apply.

Ziehm Imaging GmbH | Donaustrasse 31
90451 Nuremberg | Germany
Phone +49.(0)9 11.21 72-0 | Fax +49.(0)9 11.21 72-390
info@ziehm.com | www.ziehm.com

Ziehm Vision RFD
The ultimate C-arm
to outperform

CMOS
FLAT-PANEL
20 cm x 20 cm

ZIEHM VISION RFD HIGHLIGHTS AT A GLANCE

The treatment of cardiovascular disorders and degenerative diseases of the musculoskeletal system imposes high requirements on intraoperative imaging technologies. The Ziehm Vision RFD with its 20 cm x 20 cm flat-panel detector is the ideal solution for such complex procedures. Building on ten years of experience in flat-panel detectors, this C-arm now features the latest CMOS FD technology for excellent image quality. A powerful generator penetrates even dense anatomy while Advanced Active Cooling facilitates long and demanding procedures. In addition, an intuitive operating concept helps surgeons to ensure consistently high clinical standards. Combined, these features make the Ziehm Vision RFD well suited to demanding interventions.



CMOS imaging
excellence

TRUST IN FD PERFORMANCE

- Building on more than a decade of experience in flat-panel technology to smoothly integrate CMOS
- Lower noise levels and significantly more details in all magnifications for crystal-clear visualization
- Optimal soft tissue and bone contrast with high spatial resolution



Excellent power and
cooling technology

UNLOCK THE POWER

- Powerful generator with up to 25 kW for improved penetration of dense anatomy
- Advanced Active Cooling for uninterrupted fluoroscopy time in challenging procedures



Feature-rich
operating concept

DELIVER ADVANCED SURGICAL CARE

- Intuitive handling to ensure consistently high and unprecedented quality levels
- Wireless Freedom Concept for optimized process efficiency
- Best-in-class ergonomics with footprint of only 0.8 m² and orbital movement of 165 degrees



Next-generation
SmartDose concept

REDUCE EXPOSURE SIGNIFICANTLY

- Automatic optimization of dose and image quality with advanced anatomical programs
- Significant dose reduction with dedicated SmartDose¹ functions, even for pediatric surgery²