

GE Healthcare

# Vivid S70



Ultrasound. Elevated.

# Welcome to the Vivid™ S70 from GE Healthcare – a portable, robust system with 4D TEE capability that takes cardiovascular ultrasound to new heights by helping to reduce non-diagnostic exams and enhancing collaborative care.

## Put your department ahead of the technology curve

By combining the proven breadth and performance of the Vivid product line with the cSound™ powerful, software-based beamformer image reconstruction platform, the Vivid S70 takes ultrasound to a whole new level – delivering excellent image quality in cardiac as well as shared service at an affordable price.

Compared to many conventional scanners, the system acquires more information up front, achieving consistent data across a wide variety of patients while enabling many valuable quantification tools and workflow enhancements that support efficient and confident diagnosis.

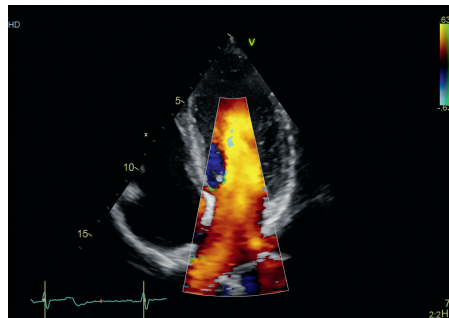
The many ways Vivid S70 with cSound performance elevates patient care:

- Excellent visualization quality in 2D, color flow, and Doppler and 4D formats
- Excellent spatial resolution and detail
- New capabilities including automated quantification of the LV and MV

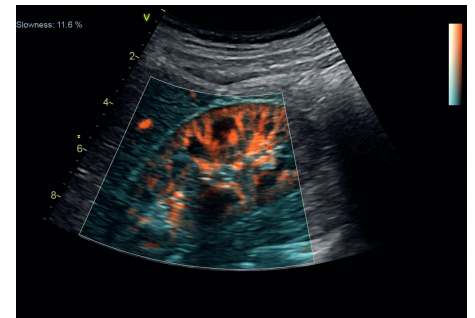
## Visualization

### Exceptional 2D TTE

The Vivid S70 quickly brings you quantifiable information across a wide variety of patients – even those with body types or conditions that make them difficult to scan. GE's XDclear™ probe technology pairs with our new imaging platform to capture data from every channel in the probe.



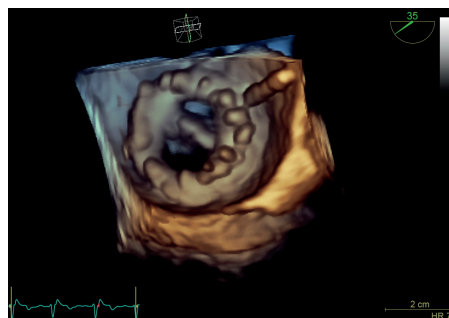
**Adult Echo Color Doppler** - The M5Sc phased array cardiac transducer merges matrix array with high-performing XDclear technology and provides ultra-wide bandwidth and superb image quality.



**B-flow** is a digital imaging technique that provides real-time visualization of vascular hemodynamics using techniques to boost blood echoes.

### Exceptional 4D TEE

4D TEE is simple, quick and clear for imaging in the echo lab, cath lab and OR.

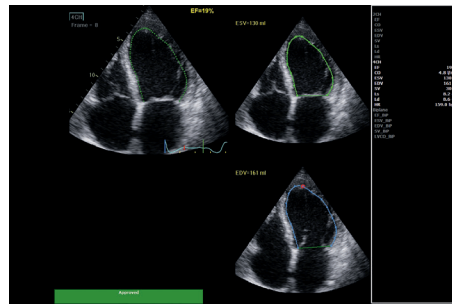


**4D TEE** supports invasive surgical procedures.

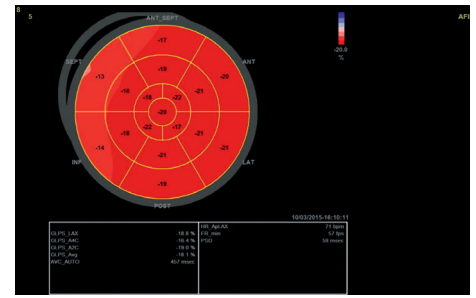
# Quantification

## Define the care path

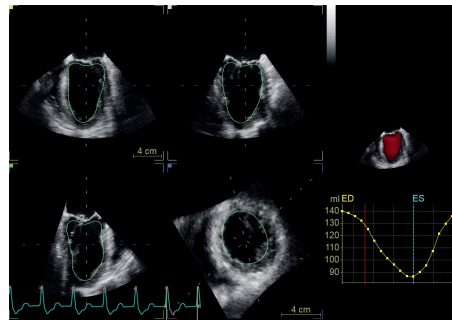
Quantification with Vivid S70 is all about helping providers evaluate and address cardiovascular issues. Count on a full suite of simple, intuitive tools to support your work.



**Auto EF** - Based on a 2D-speckle tracking algorithm, assists in measuring the most commonly used parameter to describe the LV function.



**Automated Function Imaging (AFI)** - Assess and quantify left ventricular wall motion, calculating a large set of parameters.



**Auto LVQ** - Adapted to work with the full volume data sets acquired with the 4D TEE transducer, 4D Auto LVQ for TEE brings you a fast, easy, two-click method of placing points which defines the initial endocardial border. This quantification tool provides you with a graphical output of pure 4D volume data using a mesh-based surface-tracking model.

# Workflow

## Streamlining your exams

Vivid S70 with cSound performance empowers your team with a variety of efficient tools. You'll find it easy to achieve consistent information across a wide variety of patients. And how tools like the ability to quantify wall motion abnormalities can help you diagnose. You'll also appreciate the simple tablet-like experience of the Image Manager and configurable interface.

## 4D TEE

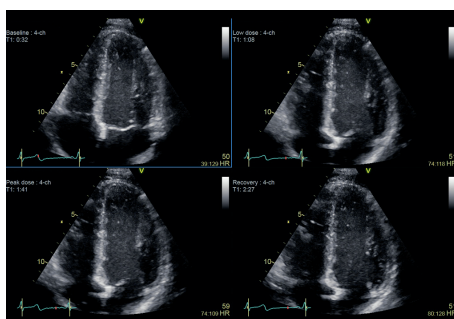
With TEE procedures growing, so is the need to find ways to achieve the benefits of 4D imaging without compromising productivity.

Powered by cSound, 4D TEE is simple, quick and clear on the Vivid S70. View precise images of the heart during assessment and diagnosis in the echo lab. Confidently steer image-guided procedures in the cath lab. Support invasive surgical procedures in the OR.

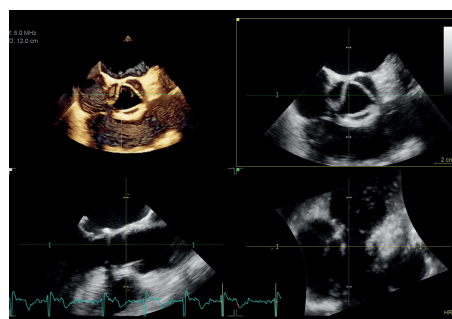
# Ergonomics

## Designed for reliability and ease of use

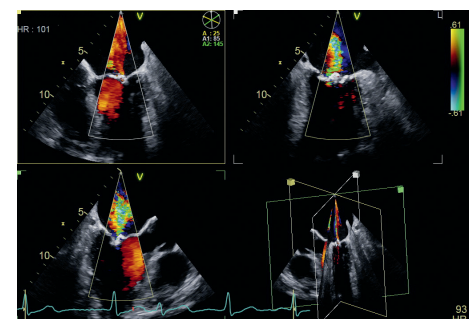
- Flex Fit – Adjust control panel and monitor for comfort and convenience
- Easy mobility with smart standby
- Small footprint
- 12.1" touch screen
- 19" LED monitor with articulating arm



**Smart Stress** - A stress package with memory buffer offers pharmaceutical, treadmill and bicycle stress exam protocols, with user-configurable templates and shuffle mode.



**FlexiSlice** - Easily switch from volumes to slices and back in live or replay mode. Extracting 2D slices from 4D volumes can be a complicated process. FlexiSlice is an intuitive, interactive tool for obtaining many 2D or render views in either live or replay mode. With FlexiSlice, you can slice in any direction, and easily select a slice view to be projected as a render image.



**Triplane Imaging** lets you image three planes from the same heartbeat, with high temporal and spatial resolution.



## About GE Healthcare

GE Healthcare provides transformational medical technologies and services to meet the demand for increased access, enhanced quality and more affordable healthcare around the world. GE (NYSE: GE) works on things that matter - great people and technologies taking on tough challenges. From medical imaging, software & IT, patient monitoring and diagnostics to drug discovery, biopharmaceutical manufacturing technologies and performance improvement solutions, GE Healthcare helps medical professionals deliver great healthcare to their patients.

## Imagination at work

GE Healthcare GmbH  
Beethovenstr. 239  
42655 Solingen, Germany  
T +49 212-28 02-0  
F +49 212-28 02-28  
[www.gehealthcare.com](http://www.gehealthcare.com)

**UNITED KINGDOM**  
GE Healthcare  
Pollards Wood  
Nightingale Lane  
Chalfont St Giles  
Buckinghamshire, HP8 4SP  
T +44 1494 544000

**AMERICAS**  
GE Healthcare  
9900 West Innovation Drive  
Wauwatosa, WI 53226  
U.S.A.  
T +1 888 202 5582

©2015 General Electric Company - All rights reserved.

General Electric Company reserves the right to make changes in specifications and features shown herein, or discontinue the product described at any time without notice or obligation. This does not constitute a representation or warranty or documentation regarding the product or service featured. The results expressed in this document may not be applicable to a particular site or installation and individual results may vary. This document and its contents are provided to you for informational purposes only and do not constitute a representation, warranty or performance guarantee from GE Healthcare.

GE, the GE Monogram, imagination at work, cSound, Vivid, and XDclear are trademarks of General Electric Company or one of its subsidiaries.

All third party trademarks are the property of their respective owners.

GE Medical Systems Ultrasound & Primary Care Diagnostics, LLC, a General Electric Company, doing business as GE Healthcare.

JB31161XX 299-15-U003E