



PHILIPS

Ultrasound

New challenges call for a new standard

EPIQ Elite premium ultrasound system

Upon its introduction, the Philips iU22 ultrasound system set the standard. Now, the Philips EPIQ Elite ultrasound system brings you an entirely new class of premium ultrasound, which means there's never been a better time to upgrade performance, ease of use and exam consistency.

New EPIQ Elite meets the challenges facing premium ultrasound today. Premium ultrasound now demands improved clinical information from each scan, faster and more consistent exams that are easier to perform, and a higher level of confidence, even for technically difficult patients. This new class of EPIQ is built on major advances in design, performance and intelligence for the enhanced diagnostic confidence and workflow advantages that lead to better patient care.

Designed for a new era

Cutting-edge ergonomics and exceptional visual experiences

EPIQ Elite enhances the premium ultrasound experience from ease of use to workflow to ergonomics to portability.



iU22



EPIQ Elite

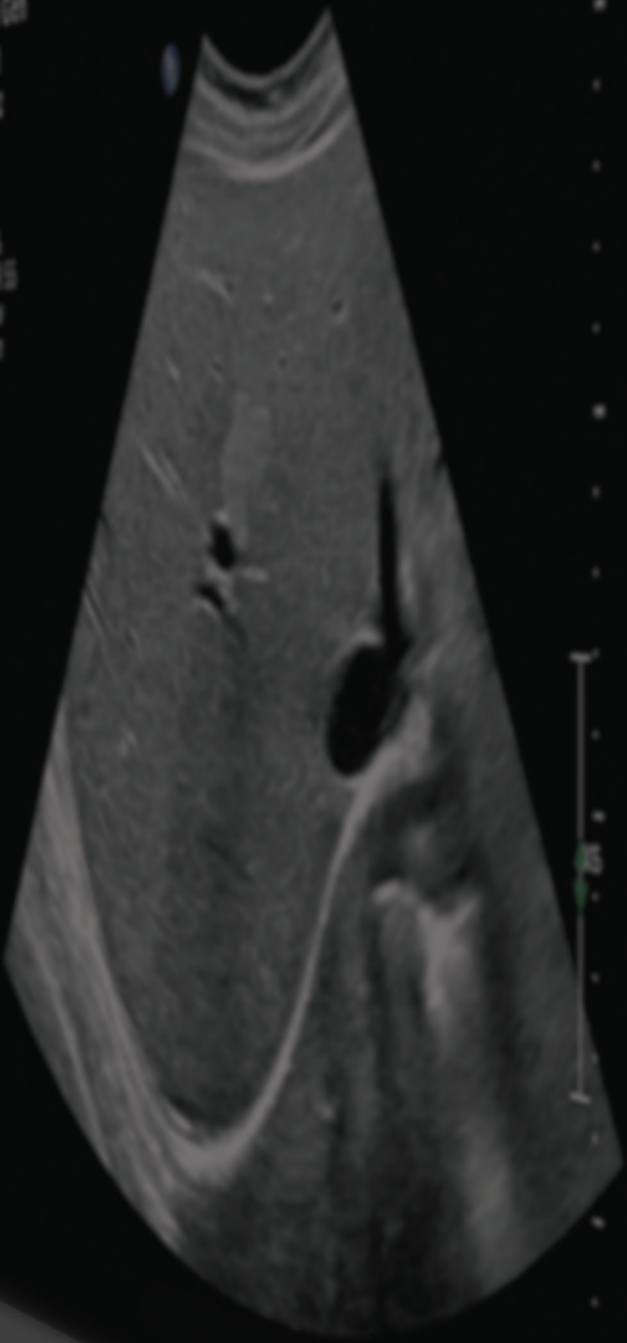
Design

| | | |
|--------------------------|--|--|
| Ergonomics | Limited rotation for the control panel and monitor, contributing to user stress and strain | Full rotation of control panel and monitor, with greater ergonomic advantages |
| Monitor size | 21.5-inch flat panel monitor | 24-inch HD MAX display to experience full high-definition viewing, expanding the HD work environment |
| Portability | No sleep mode; full shut down of 2-3 minutes required for portable exams | Sleep mode battery backup, 30 seconds to boot down/boot up |
| Weight | 345 lbs | 230 lbs (more than 100 lbs lighter) |
| Noise level | > 75 db | Library-quiet at about 41 db |
| Touchscreen tablet | Touchscreen does not allow swipe control | Complete swipe screen, leading to less need to reach and to push buttons |
| MaxVue | Not available (standard format is 4:3) | Full-screen HD viewing at 16:9, with one million more pixels than standard |
| Transducer compatibility | Larger connectors and only three active ports | New advanced transducers, with four active ports and transducer connectors that are smaller by 80% |

PHILIPS

TIS03 MI 1.2

100 120 140 160 180 200 220 240 260 280 300 320 340 360 380 400 420 440 460 480 500 520 540 560 580 600 620 640 660 680 700 720 740 760 780 800 820 840 860 880 900 920 940 960 980 1000



100

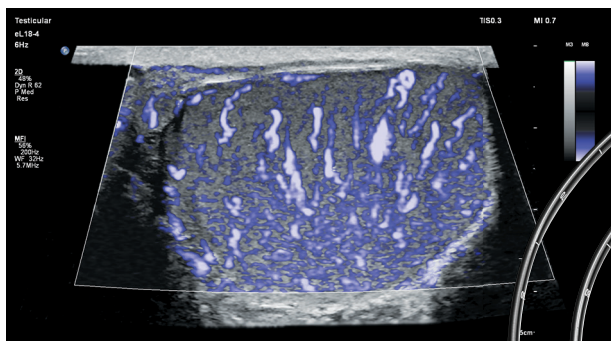
10cm

EPIQ 

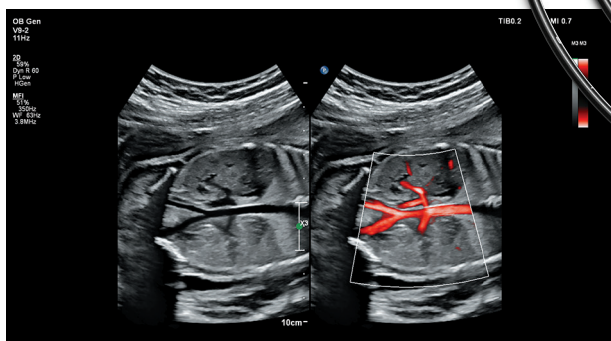
Elevate performance

A confident diagnosis, even with your most difficult patients

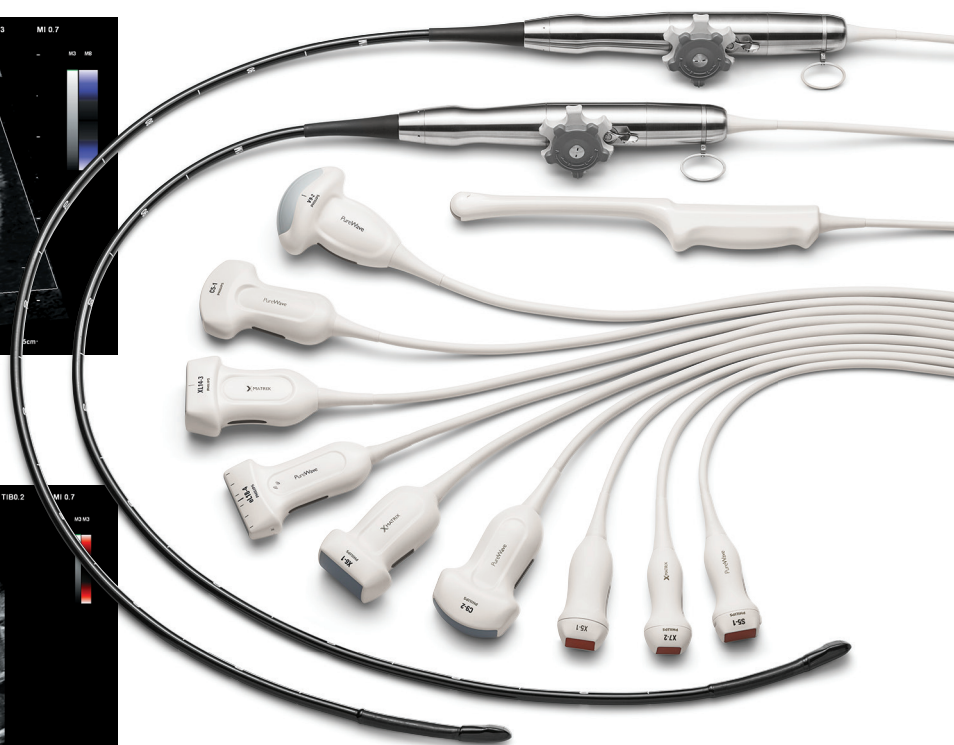
EPIQ Elite features an uncompromised level of clinical performance, meeting the challenges of today's most demanding practices. The most powerful architecture ever applied to ultrasound imaging touches all aspects of acoustic acquisition and processing, allowing you to truly experience the evolution of ultrasound to a more definitive modality.



MicroFlow Imaging on EPIQ Elite detects slow and weak blood flow.



Fetal bowel with EPIQ Elite MicroFlow Imaging



Performance



iU22



EPIQ Elite

| | | |
|--|--|--|
| Color | Standard color | New color algorithm and advanced vessel detail |
| Beamformer | xSTREAM line-by-line image former is dependent on focal zone placement | nSIGHT Imaging architecture with coherent beam reconstruction offers better penetration, faster frame rates, and greater image uniformity and is less dependent on focal zone placement Processes the equivalent of ten DVDs/sec, while other ultrasound systems process the equivalent of 2 DVDs/sec |
| Post-processing | No post-processing | 2D gain and single frame, scroll and annotation post-processing |
| Reporting | No customization of report templates | Advanced reporting features and customizable report templates |
| XRES image processing | Yes | Variable XRES and next-generation XRES Pro to enhance detail, penetration and image uniformity |
| xMATRIX | Limited transducer selection | Yes, introduces the new XL14-3 transducer, which is the world's first xMATRIX linear array transducer |
| Compatible with transducer with tilt feature | No | Compatible with 3D9-3V transducer to maintain patient comfort during exam |
| Hard drive size | Conventional 1 GB HD | Dual terabyte with SSD |
| MicroFlow Imaging | No, features CPA instead | Detects low-velocity, low-volume blood flow perfusion in vascular beds |
| Trapezoid Imaging | No | Yes, enhancing field of view with fewer artifacts |
| Needle visualization | No | Yes, to enhance confidence during procedures |
| Fusion navigation | No auto registration | Auto registration for CT/MRI/US |
| TrueVue/GlassVue | Traditional 3D/4D chroma fetal rendering | Advanced photorealistic fetal rendering in 3D/4D |
| TouchVue/MPR Touch | No | Yes, enhanced 3D workflow using the touchscreen |
| PureWave | Limited transducers (C5-1, C10-3v, S5-1, X6-1, X5-1, X7-2t, X7-2) | Full suite of PureWave transducers (C5-1, C9-2, C10-3v, S5-1, S9-2, eL18-4, V9-2, X5-1, X6-1, XL14-3, X8-2t, X7-2) |
| Elastography | Strain and ElastPQ for quantifiable single-point elastography measurements on curved array | Strain, ElastPQ and ElastQ Imaging for real-time color-coded quantifiable measurements for both curved and linear arrays |

Intelligence to help ultrasound do more

Becoming more reproducible and informative

At the heart of the powerful architecture of EPIQ Elite is our exclusive Anatomical Intelligence for Ultrasound (AIUS), designed to elevate ultrasound system performance. With advanced organ modeling, image slicing and proven quantification, exams are easier to perform and are more reproducible, and deliver new levels of clinical information.



Intelligence



iU22



EPIQ Elite

| | | |
|--|--|--|
| Anatomical Intelligence for Ultrasound | Limited functionality | AI Breast, aReveal ^{AI} , aBiometry Assist ^{AI} , Dynamic Heart Model ^{AI} , AutoReg |
| aBiometry Assist ^{AI} | No auto calculations | Auto calculations for common OB measurements |
| aReveal ^{AI} | No auto sculpting tool | One-touch fetal face reveal uses AIUS to sculpt away data around the fetal face by recognizing the geometry of the skull |
| Anatomical Intelligence for Breast (AI Breast) | No | AI Breast allows visual mapping of screen anatomy, enhancing workflow and documenting full coverage of the breast |
| Auto-optimization | iSCAN for one-touch image optimization | AutoSCAN for continuous image optimization, in addition to iSCAN |
| Security | Encrypted hard drive | Defense-in-depth strategy, with five layers of security using the latest Windows operating software |
| DICOM Query/Retrieve | US-only DICOM Query/Retrieve | Full DICOM Query/Retrieve from PET, CT, MRI, US and X-ray |
| Wireless transfer | No | Yes |

It's time to expect more from premium ultrasound

EPIQ Elite introduces a new class of premium ultrasound, and it will raise your expectation of how far an ultrasound system can go in helping you deliver confident and comprehensive care to your patients.

